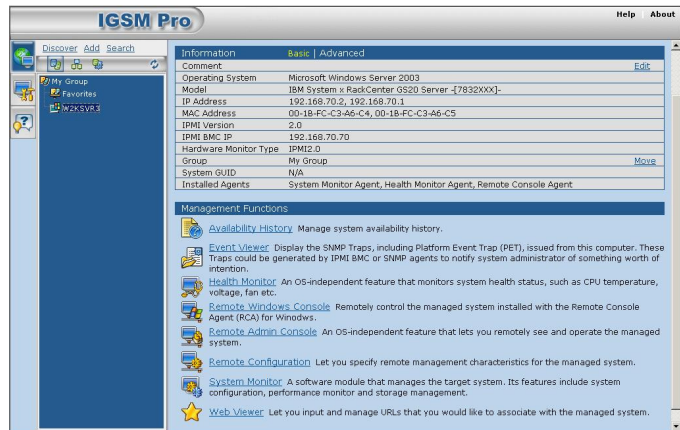


# WASIM IGSM

IGSM is a network management solution that allows you to view and manipulate all your systems and spot operational problems or potential malfunctions in servers in a network environment, without sacrificing efficiency. It is designed to perform a set of server management functions that monitor and manage your server configuration, operational status, performance indexes, environment health, critical and pre-failure alerts, etc. IGSM is designed with a snap-in mechanism so that the management service components can be integrated easily and seamlessly into an effective functional set.



The IGSM solution consists of three major parts: a management server, management consoles and IGSM agents (referred to agents for the rest of the book). In this three-tiered framework, management consoles provide the interface that sends requests and commands to the management server. It is implemented as Internet Explorer and communicates with the management server as a web client. The management server lies in the middle of the IGSM framework and acts as the management center. It receives web requests from management consoles and redirects the requests to agents if necessary, and then sends results back. The agents are situated at the end of the architecture. They are implemented as software programs installed on each of the managed server systems in the network. These agents collect and report the information about the managed server systems back to the management console.



## Features

**Management console** -- This is a new web-based interface. It provides you with a web environment where you can access the same functionality as those from the IGSM console in previous versions. The management console is actually a web presentation of the IGSM console with the help of the management server, a newly introduced component in this version. You can use Internet Explorer to connect to the management server via intranet, and perform various management tasks on target machines. With this feature, you can manage your servers at any time, anywhere, as long as you have a web connection with the management server.

**Discovery** -- The administrator can specify an IP address range, and the discovery engine will search for available systems in the address scope and display the list of discovered systems in the managed system area of the management console. This allows administrators to select desired nodes for management.

**Retrieve System Information** -- IGSM allows the user to view hardware, operating system performance, resource utilization and event information alerts about the system under management.

**Alerts** -- The management console serves as an alert center. Pre-defined events that occur on all managed nodes are forwarded to the management console. Pre-defined actions can also be assigned alerts, including: pop-up message box, audio alarm, executing a program on the management console, and e-mailing a list of recipients.

**Remote Management** -- The administrator can terminate processes that are running on managed systems. Administrators can also operate managed systems remotely (including options to shutdown, reset, and power on) with the remote management capability.

**Unified User Interface** -- The Console user interface provides a dynamic display of related menu items and management functions in a unified setting, allowing administrators to easily switch views from various managed nodes with different management functions.